

# LLANDAFF CENTRE OF MISSION

**April 2018**



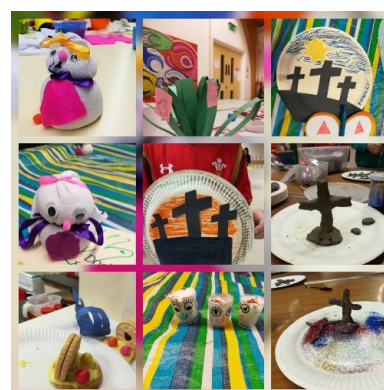
Andy Settle



Hannah Seal

**Hello!** It's been a busy time here at the Llandaff Centre of Mission. This newsletter comes to you with thanks for your prayers and continual support of our work. We couldn't do this work without your prayers, so thank you. So, here's a little update on what we've been up to and what's coming up.

**Messy Churches** continue to grow in strength. The Messy Churches at Seven Sisters have been well attended and we're building good relationships with the families who attend. The Family Service which has grown out of this has been well received and we'll be able to overcome all the technical issues that come with a building which isn't necessarily the warmest of the most user friendly!



**Seven Sisters Messy Church**



**Banwen Messy Church**

Unfortunately due to low numbers and other difficulties, we are no longer running a Messy Church at Briton Ferry. However the church has continued to work with families and had a successful event over the Easter season. We have launched a new Messy Church at Banwen which was very well attended on the first one. We have another one in a couple of weeks to celebrate the Royal Wedding and the ladies from the church are excited about serving their community in this way. We work closely with Rev Liz who is the vicar of the Dulais

Valley of which Seven Sisters and Banwen are two of the villages in this area.

**Children/youth work** continues to develop. Schools continue to welcome us in to take school assemblies, and it is a privilege and a joy to do these. **The Lounge**, the lunchtime club, in Llangatwg Secondary school continues to progress with lots of regular faces coming along on a Thursday to see us. The teenagers seem to appreciate having somewhere to sit, drink hot chocolate, play cards and chat. In January we launched 'The Lounge' in another secondary school in the deanery (Cefn Saeson) initially just for years 7 and 8. Again the teenagers really enjoy coming and have a hot chocolate and the space to hang out on a Wednesday. The local church is supporting this both financially and in terms of volunteers. The **Games Club** in Llansawell Primary School continues with the children enjoying playing games, building with



Pictures from various projects

lego, and learning the skills of turn-taking and how to lose as well as win! **Chill Out** afterschool club on a Monday in Resolven Church hall continues to be fun and noisy! We now have over 20 children on the books, and average about 12 children a week. Some weeks are more challenging than others but it is good to be building relationships with the children and their parents, as well as having fun!

We recognise that for some families the School Holidays aren't always easy. Following the success of the **Lunch Bags project** last year, Andy is working with the Churches Together in Briton Ferry again to make an distribute lunches for those who find the school holidays a struggle.

## Widening our reach

Other things like **Connected** (the drop in for older people in Resolven), prayer breakfasts, canal walks, preaching and meeting with people continue to happen, and we hope to develop some of this further. Over the summer months we will also have some special Community Fun Days which we hope will build on the connections we already have with people.

We are also in discussions with the local clergy to see how else we can support the local churches to develop their community outreach, and how we can support with church services and fresh expressions of church.



Pictures from our canal walks

## Prayers

### Thank God for...

- The continual growth of the Messy Churches at Seven Sisters and Banwen
- The Lounge and the development of this in the two secondary schools
- The good working relationships with the local clergy
- For our volunteers who enable us to do the work we do

### Please pray for...

- The upcoming community fun days this summer
- Discussions we are having with local clergy about how we can support them and their congregations in mission and evangelism
- The developing role of the Centre of Mission in the Diocese as we look to encourage and support other churches in mission and evangelism

## Financial Support

If you would like to make a regular or one-off gift to support this work please complete and return the form below or visit [churcharmy.org/donate](http://churcharmy.org/donate)

We don't take your support for granted, so thank you so much for standing with us. We want to pray for you so please let us know how we can.

# I WOULD LIKE TO SUPPORT CHURCH ARMY LLANDAFF CENTRE OF MISSION

Please return to Church Army, Wilson Carlile Centre, 50 Cavendish Street, Sheffield, S3 7RZ

Type of donation: One-off\* / Regular\* (please send me a direct debit)  
\*delete as appropriate

Amount of donation: £\_\_\_\_\_ Payment method: Cheque\* / Debit card\*

Card Number: \_\_\_\_\_

Valid from: \_\_\_ / \_\_\_ / \_\_\_ Expires end \_\_\_ / \_\_\_ / \_\_\_

Signature \_\_\_\_\_ Date \_\_\_\_\_

## Gift Aid Declaration: Boost my donation by claiming Gift Aid

Boost your donation by 25p of Gift Aid for every £1 you donate

Gift Aid is reclaimed by the charity from the tax you pay for the current tax year.

Your address is needed to identify you as a current taxpayer.

*giftaid it*

In order to Gift Aid your donation you must tick the box below:

I want to Gift Aid my donation of £\_\_\_\_\_ and any donations I make in the future or have made in the past 4 years to Church Army (please tick)

I am a UK taxpayer and understand that if I pay less Income Tax and/or Capital Gains Tax than the amount of Gift Aid claimed on all my donations in that tax year it is my responsibility to pay any difference.

Title: \_\_\_\_\_ Forename: \_\_\_\_\_ Surname: \_\_\_\_\_

Address: \_\_\_\_\_

Postcode: \_\_\_\_\_

Please contact me to let me know how I can do more to hear about and support Church Army's work. (please tick)

Tel: \_\_\_\_\_ Email: \_\_\_\_\_

## Using your personal information - Data Protection

Church Army is committed to processing the personal data you provide us with in a fair, lawful and transparent manner. We will only use your data for the purposes you have provided it for and in line with the consents you have given. We will not share your data with any third parties, except for those acting as our agents. Further details in relation to the data we hold, how that data will be processed and your rights in relation to that data are set out in our privacy notices and our data protection policy which can be found at [www.churcharmy.org/dataprotection](http://www.churcharmy.org/dataprotection)



Patron  
HM The Queen  
President  
The Rt Revd & Rt Hon  
Lord Williams of Oystermouth  
Chief Executive  
Canon Mark Russell

Registered office: Wilson Carlile Centre, 50 Cavendish Street, Sheffield S3 7RZ.  
Registered Charity Nos: 226226 & SC040457. A company limited by guarantee, registered in England No: 37169

